



CATALYST45

High Performance Tender

Originally designed and built for Emirates Team New Zealand as their number 1 chase boat, the Catalyst45 is an absolute power house capable of covering significant distances with minimal fuel consumption. Custom designed suspension seats give a comfortable ride at speeds of up to 58knots, while the cabin provides basic amenities and protection from the elements. Its strength and versatility make the Catalyst45 a supreme workhorse across a vast range of applications.



Specifications

STANDARD HARDWARE

- Suspension seats x 6
- Jabsco toilet
- Stainless grab rails
- Aft cleat x 2
- Forward cleat x 1
- Alloy fuel tanks
- Power steering

STANDARD ELECTRICS

- Navigation lights
- Bilge pump x 2
- 12 way switch panel

FUEL ECONOMY SPECIFICATIONS

for 4 x 300hp Yamaha engines

- 100 ltrs/hr at 30kts for all four engines
- 510NM at 30kts
- Powering options can be adapted for two engine set-up

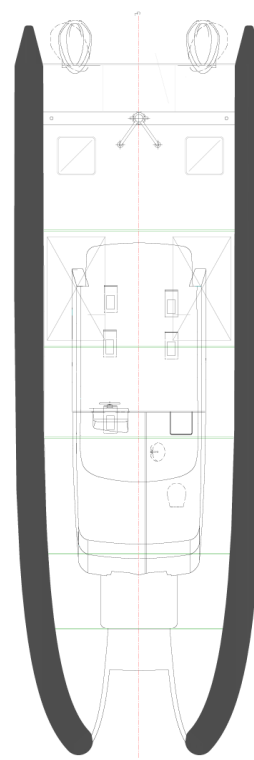
STANDARD FEATURES

- Epoxy/foam laminate hull and superstructure
- Hypalon tubes, UV and petroleum resistant with grab ropes
- Total weight (including engines and interior accommodations) approx 5500kg
- Dash panel for instruments
- Fuel tanks (2 x 800 ltr)
- Water tank (100ltr)
- Large storage capacity
- Anchor
- Walk around cabin



GENERAL PARTICULARS

DESIGNER	Morrelli & Melvin
BUILDERS	Salthouse Boatbuilders Ltd
HULL TYPE	Cat
LENGTH (L.O.A.)	14 m
BEAM	4.8 m
DRAFT <i>est.</i>	0.5 m
FUEL CAPACITY <i>est.</i>	1600 ltr
POWER	4 x 300hp outboard motors
CONSTRUCTION	Composite and inflatable tubing
DESIGN WEIGHT	5,500kg



CATALYST 45

Specifications

POWER OPTIONS

- 4 x 300 V6 Yamaha engines
- 2 x 350 V8 Yamaha engines
- Other power options available on inquiry

CUSTOM OPTIONS

- Different layout options available
- Options in seating, electronics, flooring

CONSTRUCTION

- Construction time for standard Catalyst45 – 4 months
- Composite construction built to high speed ABS standard

PRICING

(ex Salthouse yard, NZ\$ and excl GST)

- Standard Boat – 2 x 350 V8 Yamaha engines – NZ\$625,000
- Standard Boat – 4 x 300 V6 Yamaha engines – NZ\$675,000



For more information contact

Chris Salthouse E: chris@salthouseboats.com M: +64 21 737 484
Greg Salthouse E: greg@salthouseboats.com M: +64 21 412 432

www.salthouseboats.com